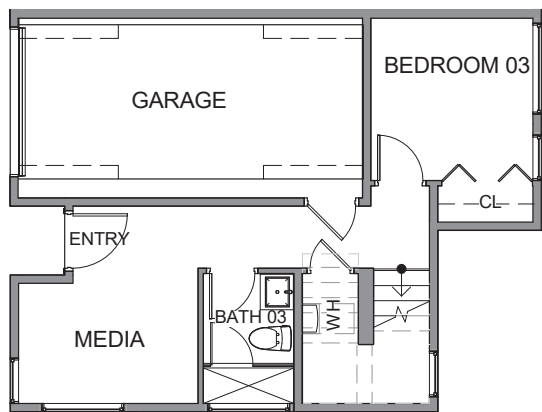
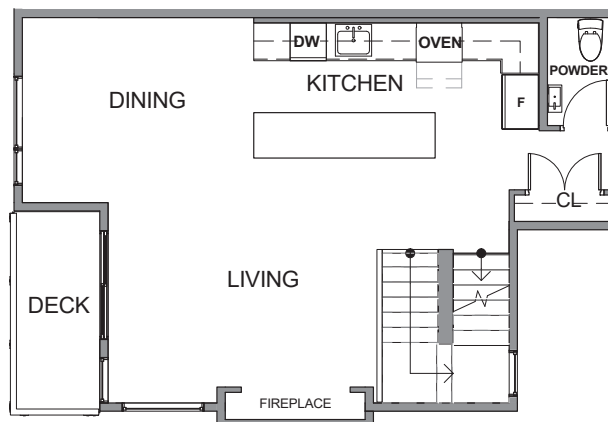




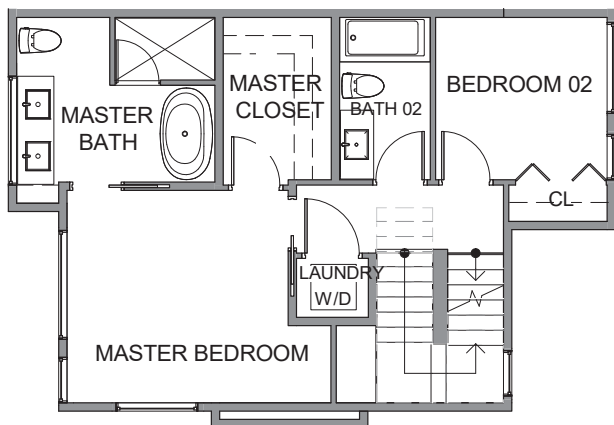
Unit B4



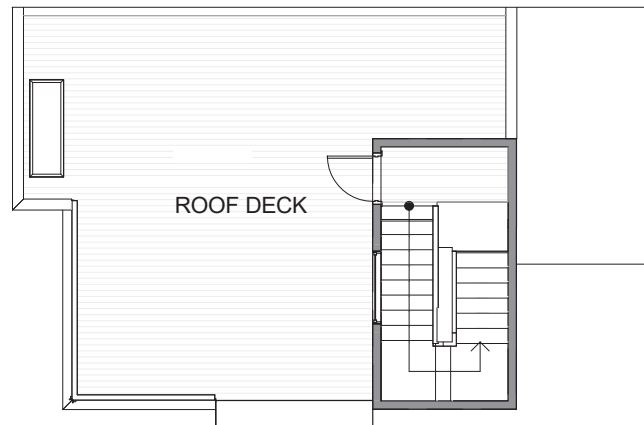
Level 1



Level 2



Level 3



Roof Deck

926-930 Broadway E, Seattle, WA 98102
1841 sf | 2 beds | 3.25 baths | 1 car garage | open concept

Floor plans are provided for illustrative and general informational purposes only. In a continuing effort to improve our products and designs, final construction elevations, square footages, floor plan layouts and/or materials and colors may vary. Buyer to verify all information to their own satisfaction.

