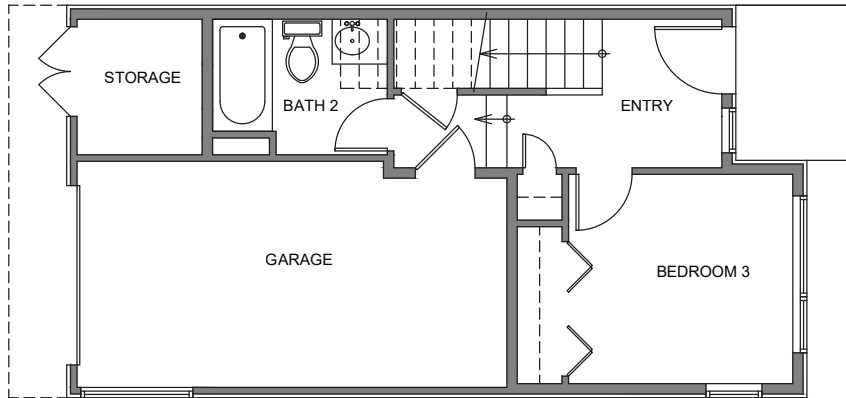
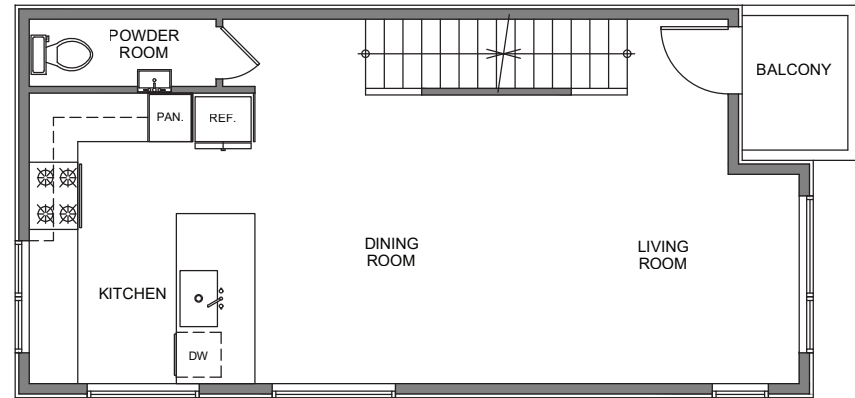




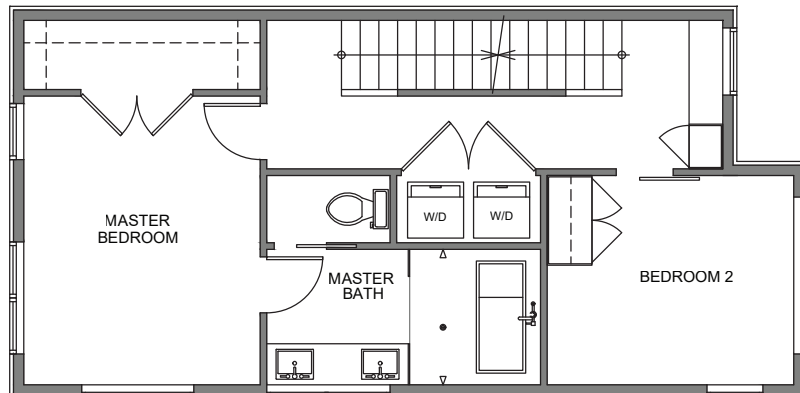
2119 B



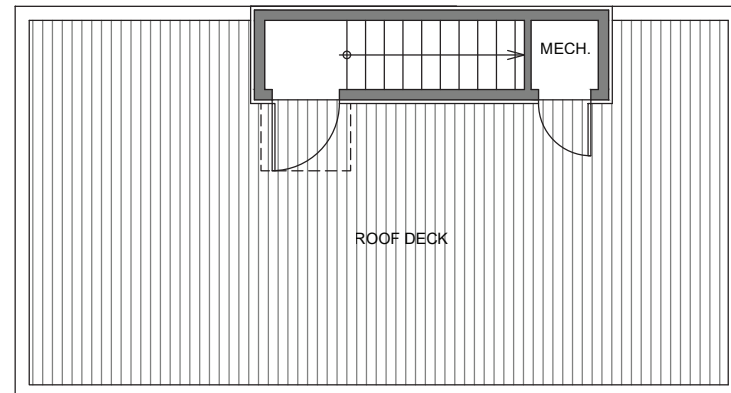
Level 1



Level 2



Level 3



Level 4

2117 4th Ave N. Seattle WA 98109
1582 SF | 3 Beds | 2.5 Baths | 1 Car Garage

Floor plans are provided for illustrative and general informational purposes only. In a continuing effort to improve our products and designs, final construction elevations, square footages, floor plan layouts and/or materials and colors may vary. Buyer to verify all information to their own satisfaction.

shelter | 
H O M E S

Habitat for the Modern Life Form.