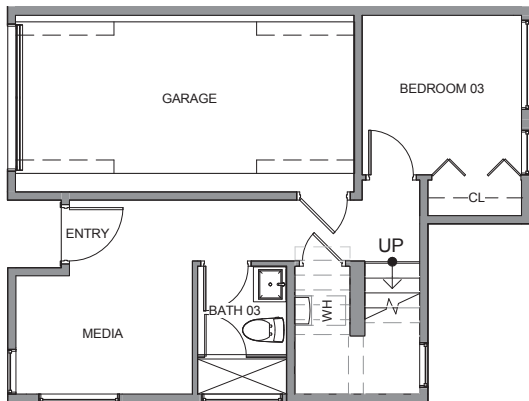
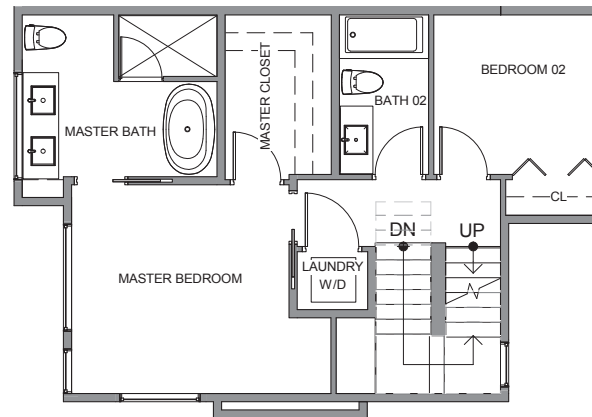




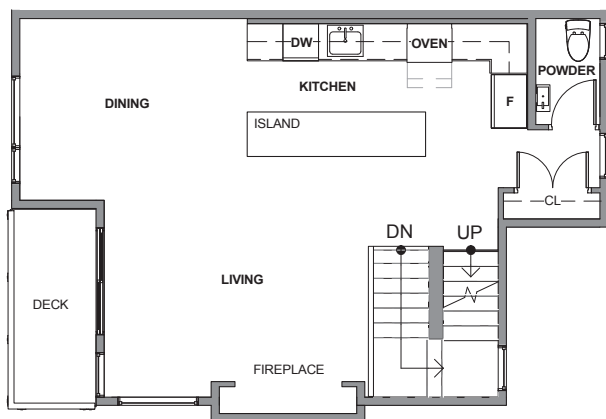
Unit B4



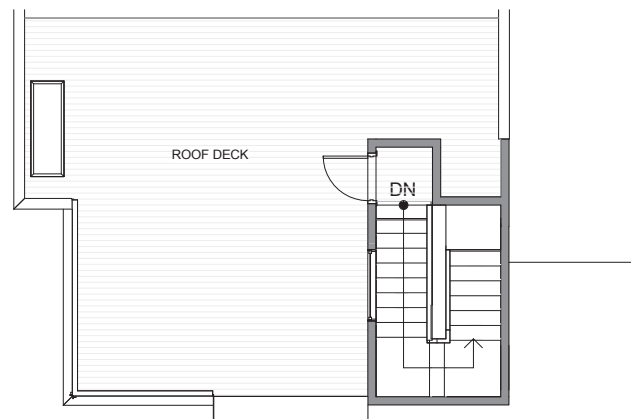
Level 1



Level 3



Level 2



Roof Deck

926-930 Broadway E, Seattle, WA 98102
1828 sf | 3 beds | 3.25 baths | 1 car garage | open concept

Floor plans are provided for illustrative and general informational purposes only. In a continuing effort to improve our products and designs, final construction elevations, square footages, floor plan layouts and/or materials and colors may vary. Buyer to verify all information to their own satisfaction.

