



2SIXTEEN

216 10TH AVE E, SEATTLE, WA 98102

PRIVATE ROOFTOP DECKS!

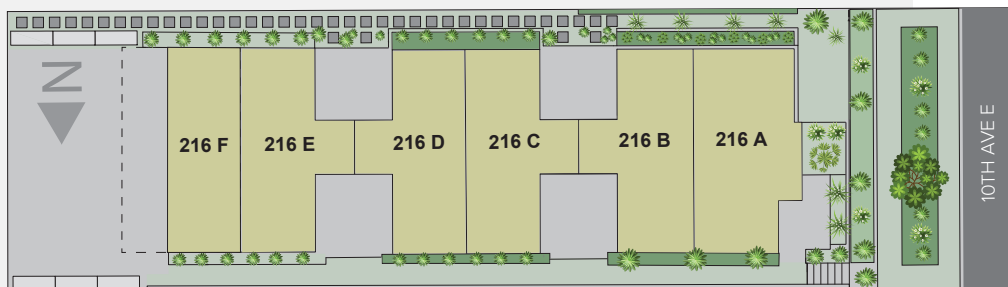


SIXTEEN

STYLISH CONNECTED LIVING ON CAPITOL HILL

Welcome to our state-of-the-art collection of six, Four-Star Built Green homes.

Ranging in size from 1,243 to 1,519 sq. ft and thoughtfully displayed amongst 3 floors of luxury. Opulent living rooms, modern design offering abundant natural light, sweeping city views, high-end appliances, and exquisite detailing. Take advantage of walking to your local grocer, eateries, bars, and the famous Dicks Drive-In with this extremely centralized location.



UNIT	SQ FT	BD/BA	EXTRAS	STATUS
216A	1519	2/2.25	open concept, rooftop deck, off-street parking	COMING SOON!
216B	1243	2/1.75	open concept, rooftop deck, off-street parking	\$859,900
216C	1243	2/1.75	open concept, rooftop deck, off-street parking	COMING SOON!
216D	1243	2/1.75	open concept, rooftop deck	\$799,900
216E	1243	2/1.75	open concept, rooftop deck	COMING SOON!
216F	1416	2/2.25	open concept, rooftop deck, off-street parking	COMING SOON!

FOR MORE INFORMATION CONTACT

CHRISTINE HOLCOMB

206.673.3409 | Director of Sales

Windermere REAL ESTATE VAN WYCK & PORTER | REAL ESTATE



SHELTERHOMESSEATTLE.COM

206.486.9209 | info@shelterhs.com | 09/18/20