



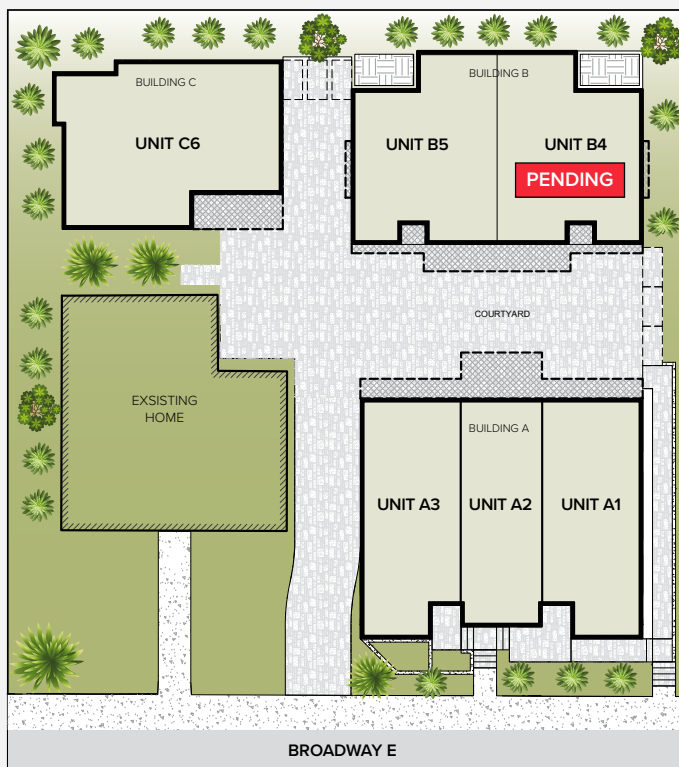
CITY INSPIRED LIVING ON CAPITOL HILL!

Element 2, located on a quiet street in the historic Harvard Belmont District. Inside each home you'll find opulent living spaces filled with luxury appliances, statement lighting, floor to ceiling windows, large kitchens, spacious islands, luxurious master suites, & private rooftop decks offering spectacular sunset views. Located just blocks away from countless restaurants, shops, parks and a bustling nightlife.

ELEMENT 2

926 & 930 BROADWAY E, SEATTLE, WA 98102

PRIVATE ROOFTOP DECKS!
WALK SCORE 90



UNIT	SQ FT	BD/BA	EXTRAS	STATUS
A1	1540	2/2.25	open concept, rooftop deck, 1 car garage	COMING SOON!
A2	1454	2/1.75	open concept, rooftop deck	COMING SOON!
A3	1540	2/2.25	open concept, rooftop deck, 1 car garage	COMING SOON!
B4	1828	3/3.25	open concept, rooftop deck, 1 car garage	PENDING
B5	1828	3/3.25	open concept, rooftop deck, 1 car garage	COMING SOON!
C6	2404	3/3.5	open concept, rooftop deck, 1 car garage	COMING SOON!

FOR MORE INFORMATION CONTACT
CHRISTINE HOLCOMB

206.673.3409 | Director of Sales

Windermere REAL ESTATE VAN WYCK & PORTER | REAL ESTATE

