



EMERALD PARK

THIS IS HOW YOU
WANT TO LIVE.

EMERALD PARK

SEATTLE'S FIRST HILL NEIGHBORHOOD



4
HOMES



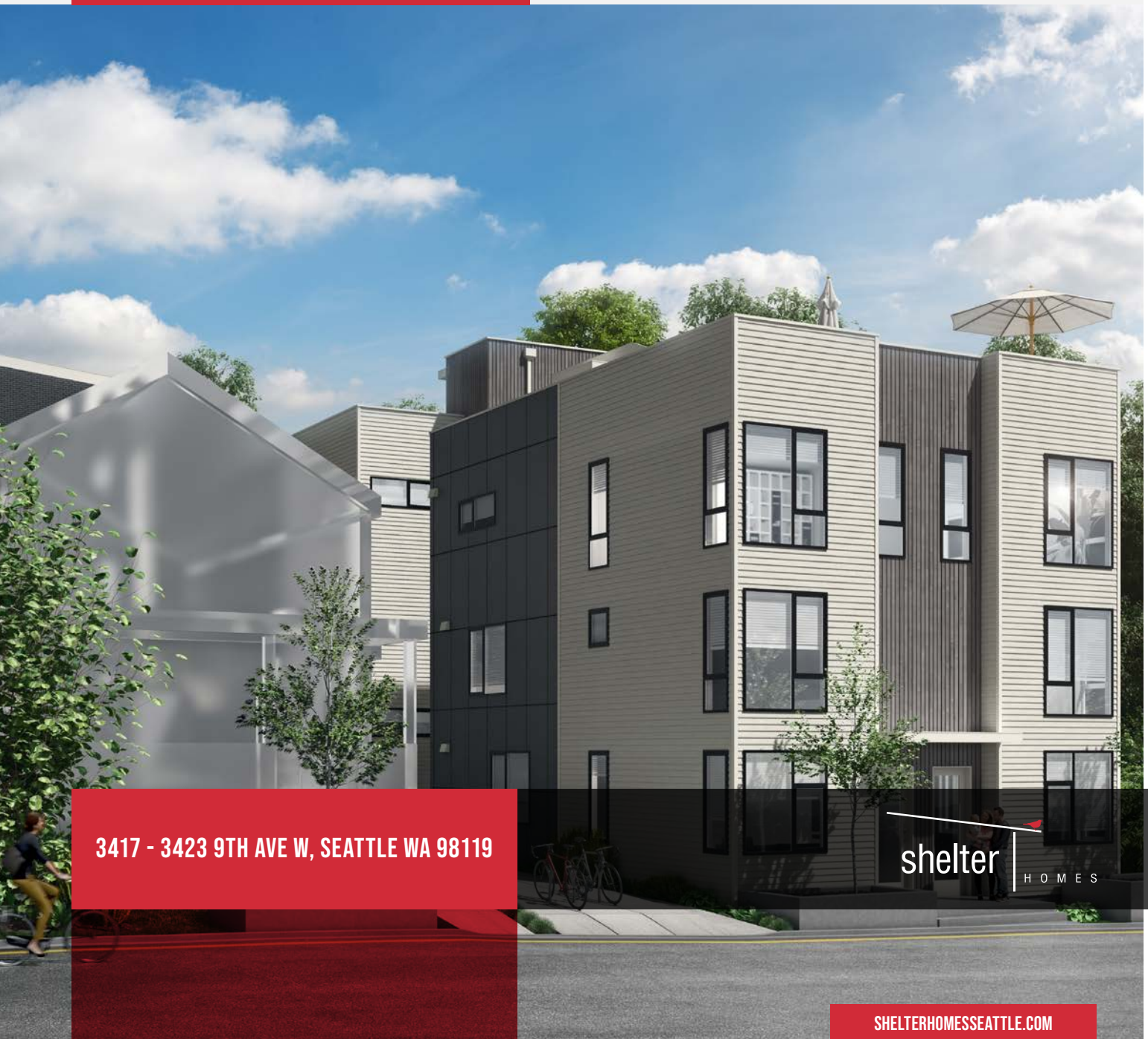
3
BEDROOMS



2.5 - 3.25
BATHROOMS



66
WALKSCORE



3417 - 3423 9TH AVE W, SEATTLE WA 98119

shelter
HOMES

SHELTERHOMESSEATTLE.COM

EMERALD PARK

PRIVATE ROOFTOP DECKS!

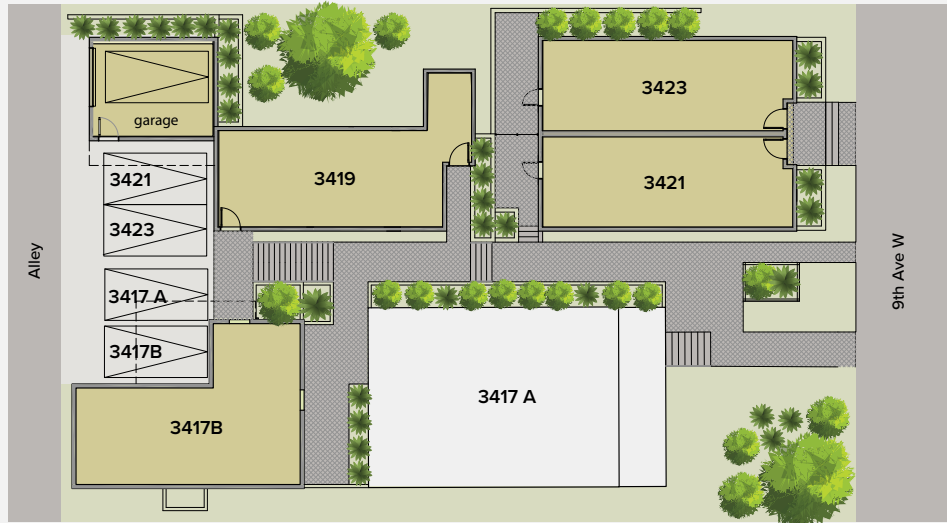
3417 - 3423 9TH AVE W, SEATTLE WA 98119



EMERALD PARK

SEATTLE'S FIRST HILL NEIGHBORHOOD

Beautiful luxury...two single family homes and two townhomes with bright & modern finishes accentuated by sleek quartz countertops & stainless steel appliances. 1901 to 2580 square feet of living space with 3 bedrooms, 2.5 to 3.5 baths. Convenient open concept and designed for comfortable efficiency. High ceilings on the main floor, beautiful masters with en-suites, and a generous rooftop deck, perfect for entertaining! Enjoy nearby parks, dining & boutique shopping. Easy commute to Downtown, I-5 & 520.



UNIT	APPROX SQ FT	BD/BA	EXTRAS	STATUS
3417A				COMING SOON!
3417 B	2509	3/3.25		COMING SOON!
3419	2580	3/3.25		\$1,539,900
3421	1901	3/2.5		COMING SOON!
3423	1901	3/2.5		COMING SOON!

FOR MORE INFORMATION CONTACT

DREW SMITH

206.910.6340 | drew@urbanseattle.com

URBAN COMMERCIAL PARTNERS



SHELTERHOMESSEATTLE.COM

206.486.9209 | info@shelterhs.com | 04/10/21

The following specifications are provided by the Seller at their option. Seller may change these specifications at any time without notice, provided the substitution is equal to or better than the original in Seller's sole discretion. Requested changes or substitutions are allowable only with Seller approval. These Specifications override Plans and any Marketing Renderings.