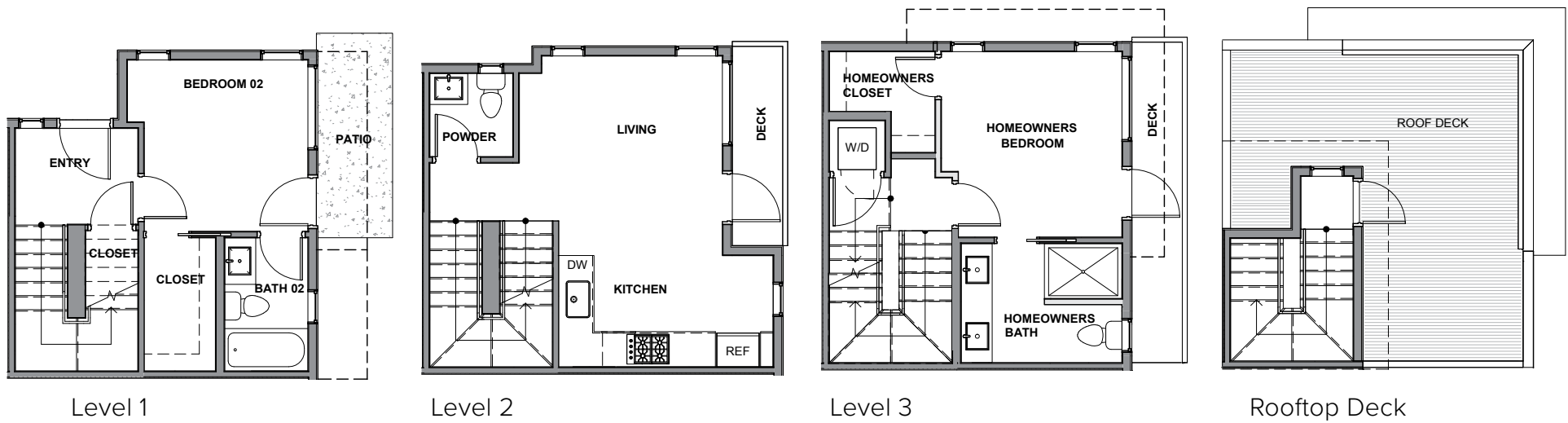





3934B



3934B S Pearl Street, Seattle, WA 98118
 Approx 1131 SF | 2 Beds | 2.25 Baths

 Floor plans are provided for illustrative and general informational purposes only. In a continuing effort to improve our products and designs, final construction elevations, square footages, floor plan layouts and/or materials and colors may vary. Buyer to verify all information to their own satisfaction.