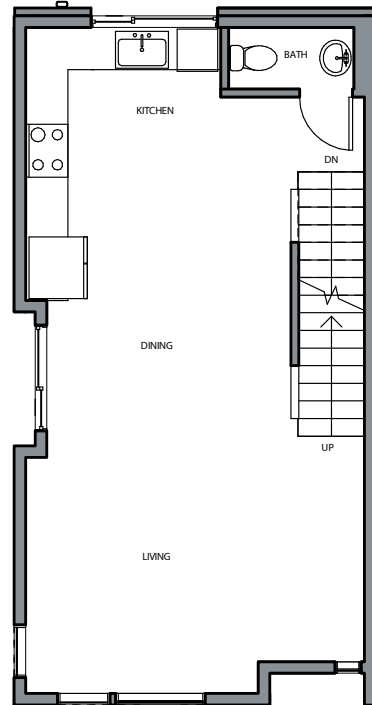
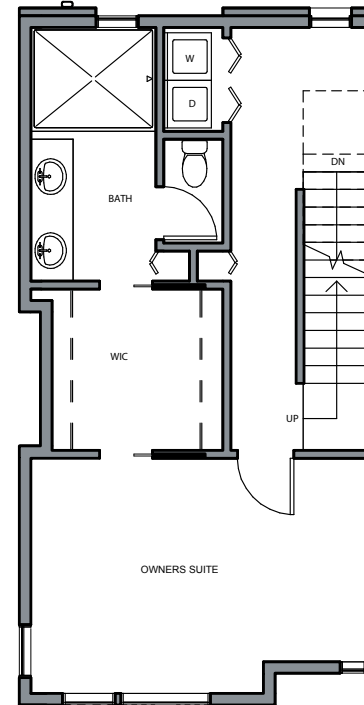


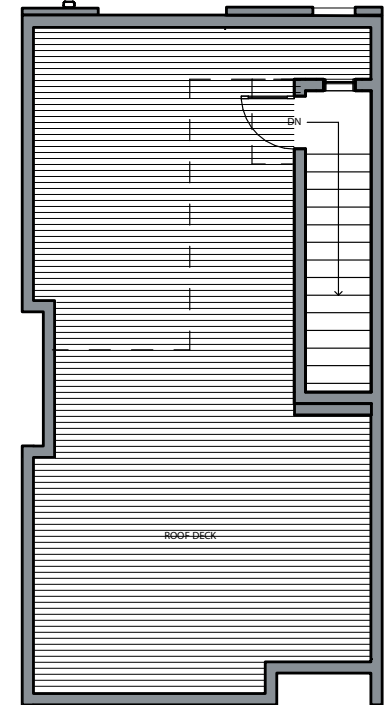
**1**



**2**




**3**



**4**

**1412 NW 92ND ST, SEATTLE, WA 98117**

**APPROX 1549 SF | 3 BEDS | 2.25 BATHS | OPEN CONCEPT | 1 STALL PARKING**

 Floor plans are provided for illustrative and general informational purposes only. In a continuing effort to improve our products and designs, final construction elevations, square footages, floor plan layouts and/or materials and colors may vary. Buyer to verify all information to their own satisfaction.