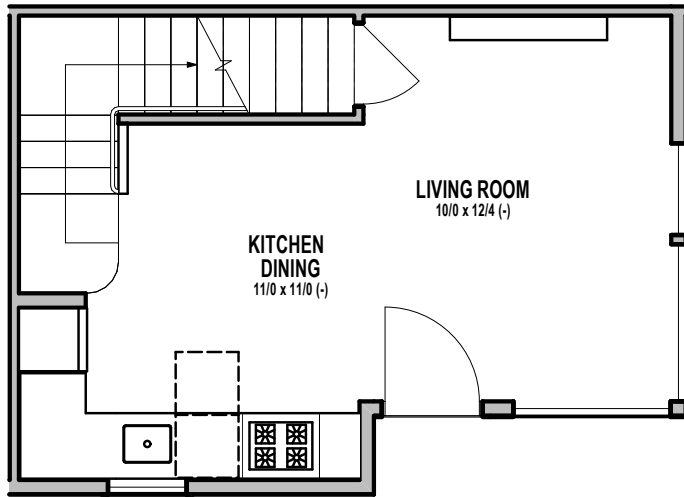
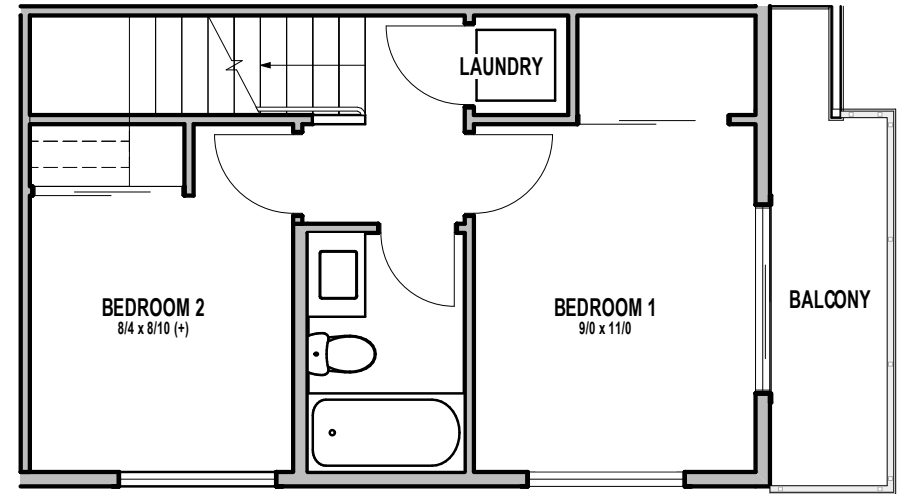




**UNIT 29**



**1**



**2**

**1612 N 92ND ST, SEATTLE, WA 98103, SEATTLE, WA 98103**  
**APPROX 685 SF | 2 BEDS | 1 BATHS | OPEN CONCEPT**



Floor plans are provided for illustrative and general informational purposes only. In a continuing effort to improve our products and designs, final construction elevations, square footages, floor plan layouts and/or materials and colors may vary. Buyer to verify all information to their own satisfaction.