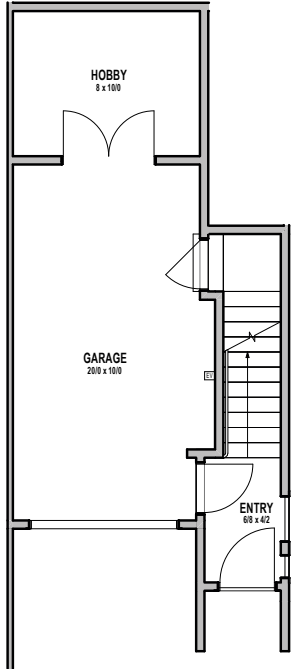
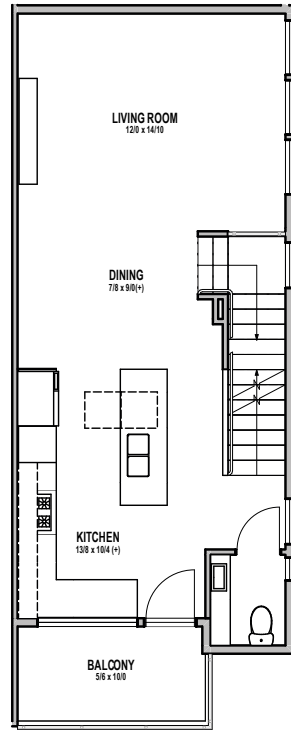




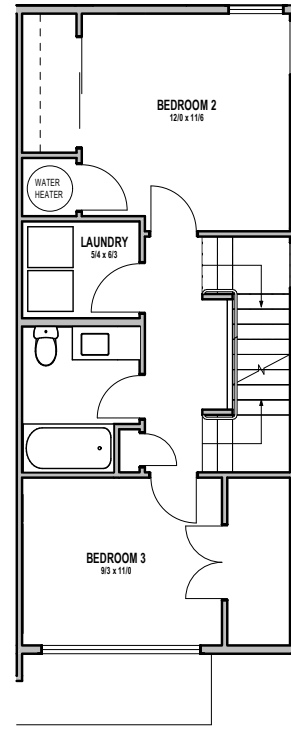
**UNIT 35**



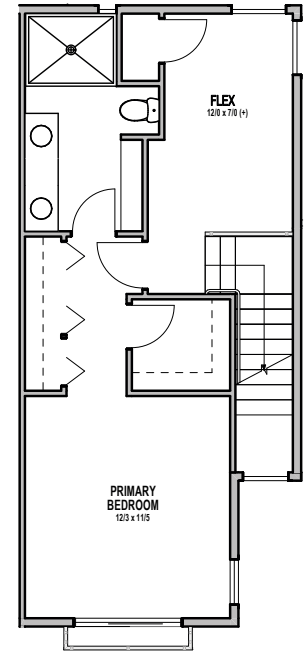
**1**



**2**



**3**



**4**

**9211D DENSMORE AVE N, SEATTLE, WA 98103**

**APPROX 1801 SF | 3 BEDS, OPTIONAL 4TH | 2.25 BATHS | HOBBY ROOM | GARAGE**



Floor plans are provided for illustrative and general informational purposes only. In a continuing effort to improve our products and designs, final construction elevations, square footages, floor plan layouts and/or materials and colors may vary. Buyer to verify all information to their own satisfaction.



**Habitat for the Modern Life Form.**