



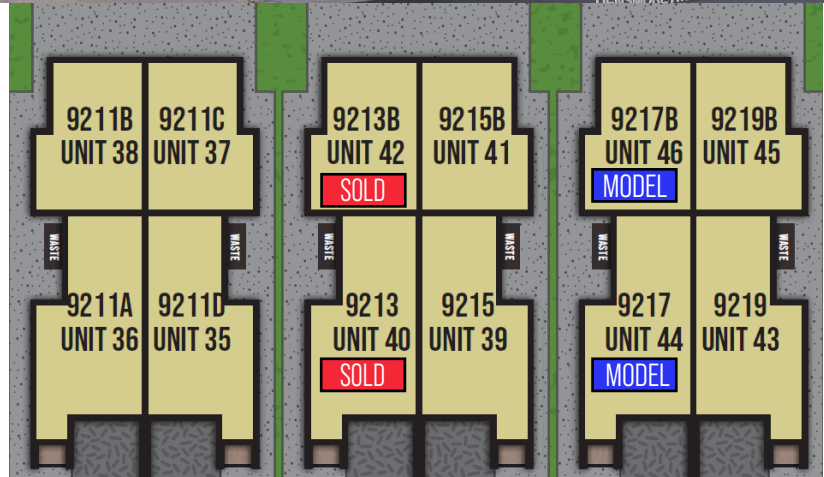
shelter
HOMES

PHASE 1 RELEASED!
Call to Schedule a Tour
of our Model Homes!

KATE DOUGLAS
425-894-8875

CLOVER

9203 DENSMORE AVE N, SEATTLE, WA 98103



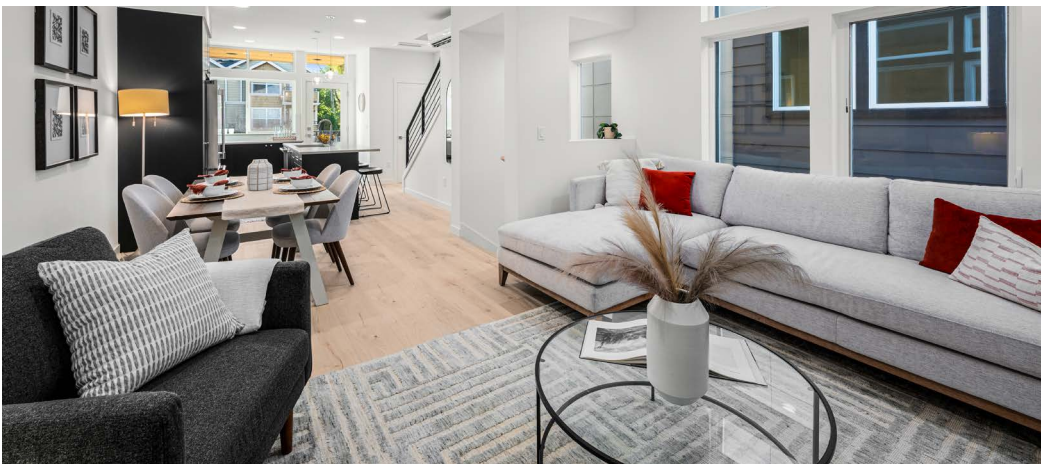
ADDRESS	SQFT	BED/BATH	PARKING	STATUS
9213	1801	4 Bed + Flex/2.25 Bath, great room, balcony	Garage	SOLD
9213B	685	2 Bed/1 Bath, balcony, patio	None	SOLD
9219	1801	4 Bed + Flex/2.25 Bath, great room, balcony	Garage	\$969,900
9219B	685	2 Bed/1 Bath, balcony, patio	None	\$499,900
9217	1801	4 Bed + Flex/2.25 Bath, great room, balcony	Garage	MODEL
9217B	685	2 Bed/1 Bath, balcony, patio	None	MODEL
9215	1801	4 Bed + Flex/2.25 Bath, great room, balcony	Garage	AVAILABLE
9215B	685	2 Bed/1 Bath, balcony, patio	None	AVAILABLE
9211A	1801	4 Bed + Flex/2.25 Bath, great room, balcony	Garage	PHASE 1
9211B	685	2 Bed/1 Bath, balcony, patio	None	PHASE 1
9211C	685	2 Bed/1 Bath, balcony, patio	None	PHASE 1
9211D	1801	4 Bed + Flex/2.25 Bath, great room, balcony	Garage	PHASE 1



PHASE 1 RELEASED!

**URBAN SOPHISTICATION,
MODERN COMFORT!**

Welcome to Clover, a contemporary townhome community offering the perfect blend of luxury and functionality. Explore spacious townhomes or versatile ADU units—designed to enhance your lifestyle with flexible options for work, leisure, or creating a personalized space. Own a home that adapts to your needs in a vibrant, growing community.



FOR MORE INFORMATION CONTACT

KATE DOUGLAS

425.894.8875

Windermere VWP|RE
REAL ESTATE



SHELTERHOMESSEATTLE.COM

206.486.9209 | info@shelterhs.com | 11.15.2024

The following specifications are provided by the Seller at their option. Seller may change these specifications at any time without notice, provided the substitution is equal to or better than the original in Seller's sole discretion. Requested changes or substitutions are allowable only with Seller approval. These Specifications override Plans and any Marketing Renderings.