

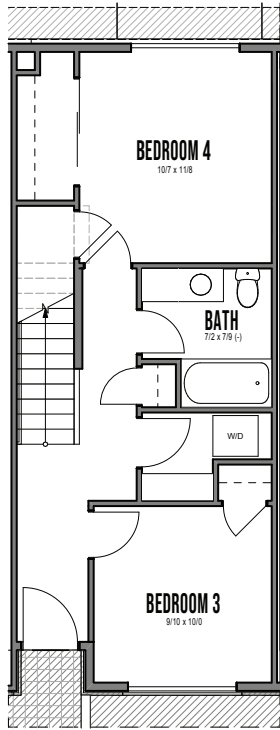


WILLOW
SEATTLE

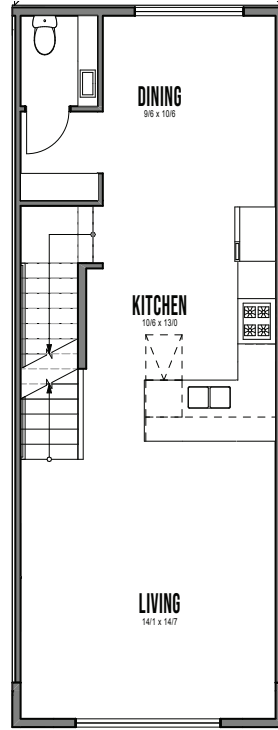
info@shelterhs.com | 206.486.9209 | shelterhomesseattle.com



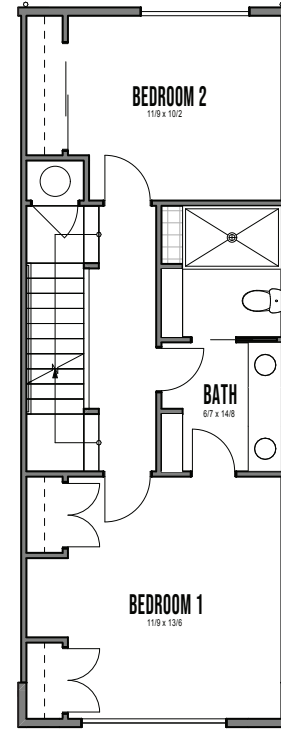
UNIT B2



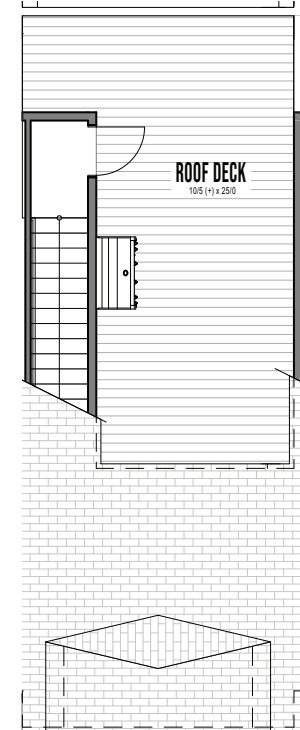
1



2




3



4

8337C 12TH AVE NW SEATTLE, WA 98117

APPROX 1801 SF | 4 BEDS | 2.25 BATHS | ROOF DECK | OPEN CONCEPT

 Floor plans are provided for illustrative and general informational purposes only. In a continuing effort to improve our products and designs, final construction elevations, square footages, floor plan layouts and/or materials and colors may vary. Buyer to verify all information to their own satisfaction.



Habitat for the Modern Life Form.