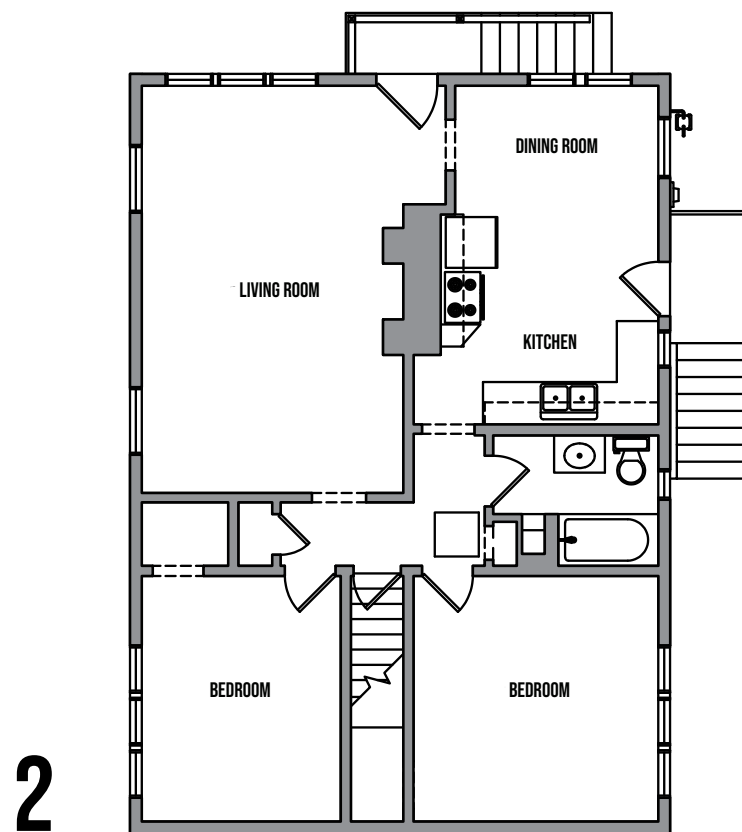
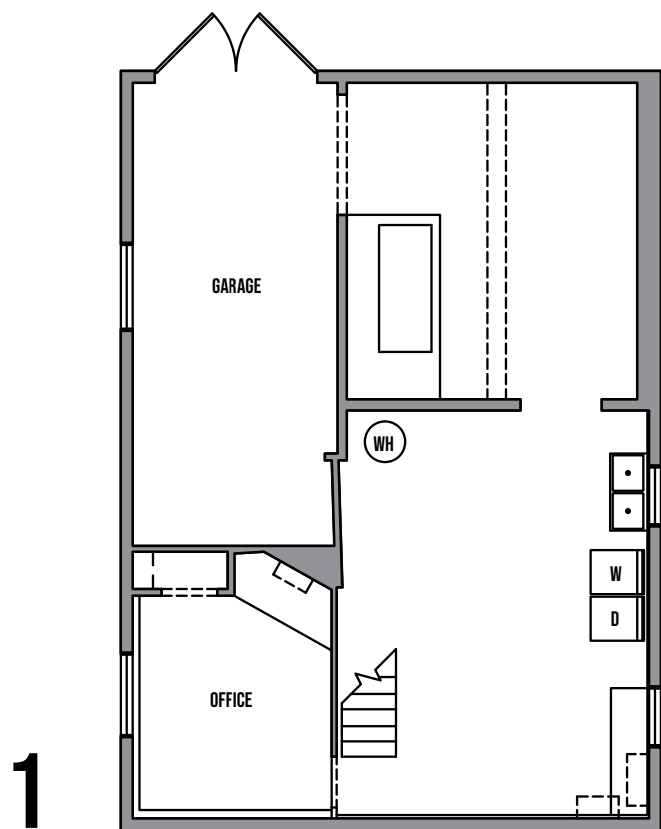




info@shelterhs.com | 206.486.9209 | shelterhomesseattle.com



2109 SW GENESEE ST, SEATTLE 98106

APPROX 1754 SF | 2 BEDS | 1 BATHS | OFFICE/FLEX | 1 CAR GARAGE



Floor plans are provided for illustrative and general informational purposes only. In a continuing effort to improve our products and designs, final construction elevations, square footages, floor plan layouts and/or materials and colors may vary. Buyer to verify all information to their own satisfaction.



Habitat for the Modern Life Form.