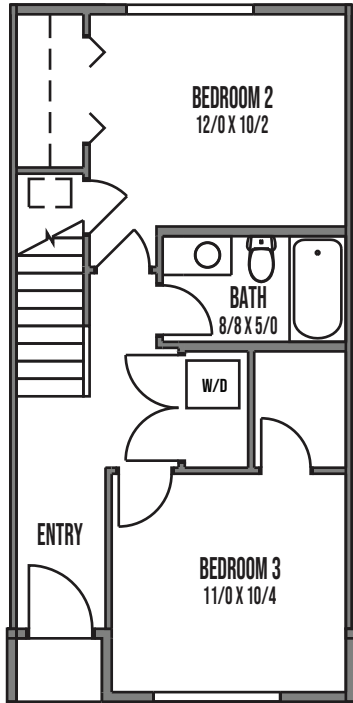
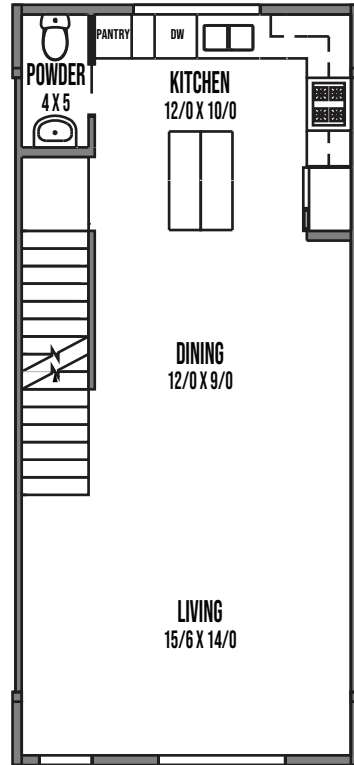




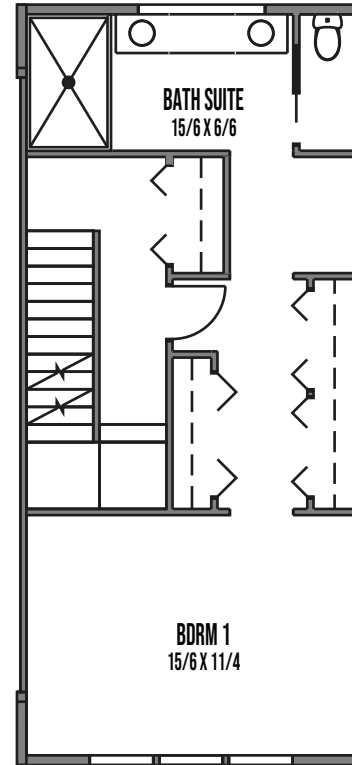
UNIT 8323B



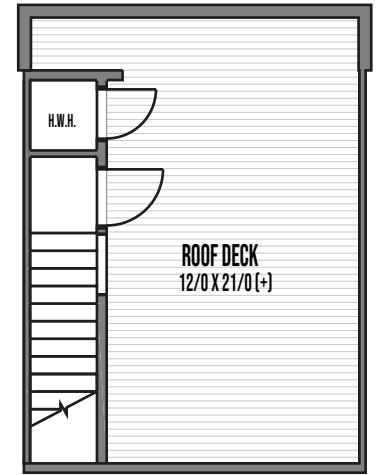
1



2



3



4

8323B 12TH AVE NW, SEATTLE, WA 98117

APPROX 1797 SF | 3 BEDS | 2.5 BATHS | DECK | PARKING



Floor plans are provided for illustrative and general informational purposes only. In a continuing effort to improve our products and designs, final construction elevations, square footages, floor plan layouts and/or materials and colors may vary. Buyer to verify all information to their own satisfaction.

shelter | HOMES

Habitat for the Modern Life Form.